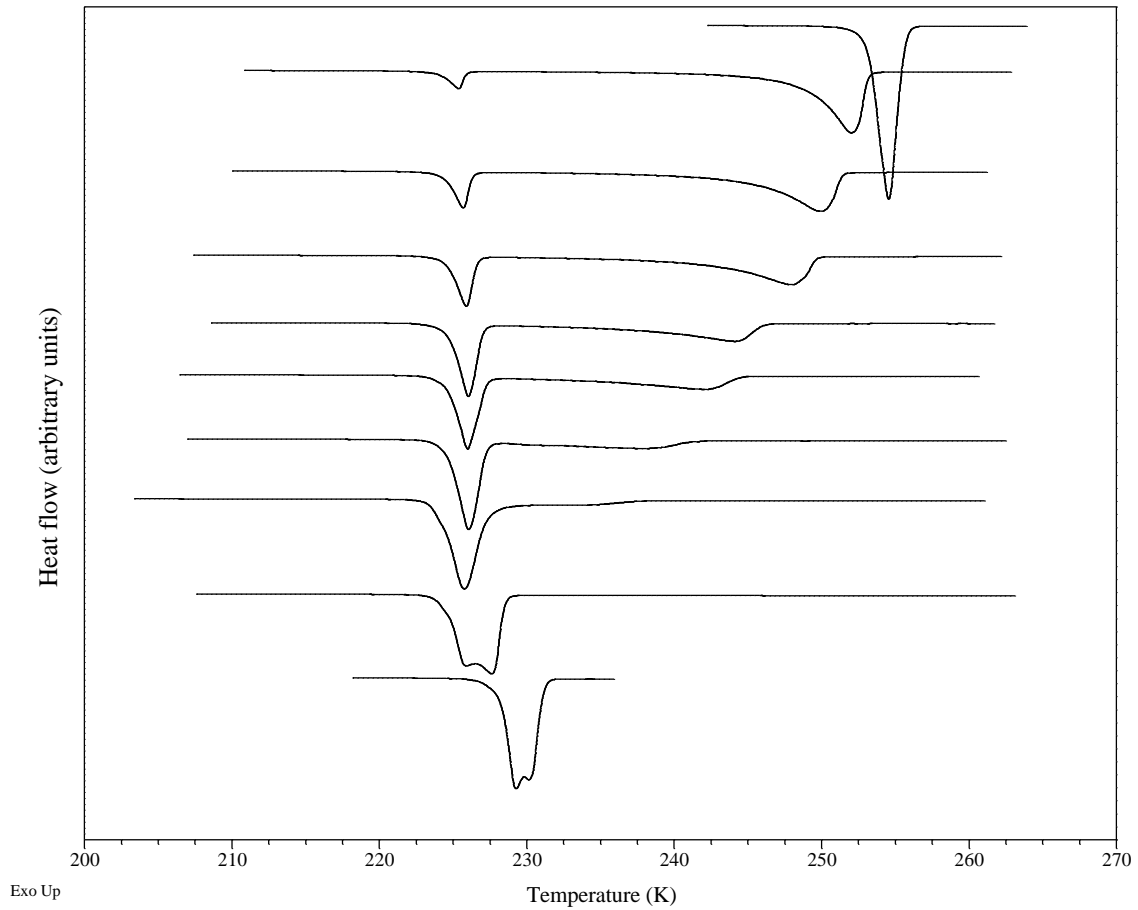
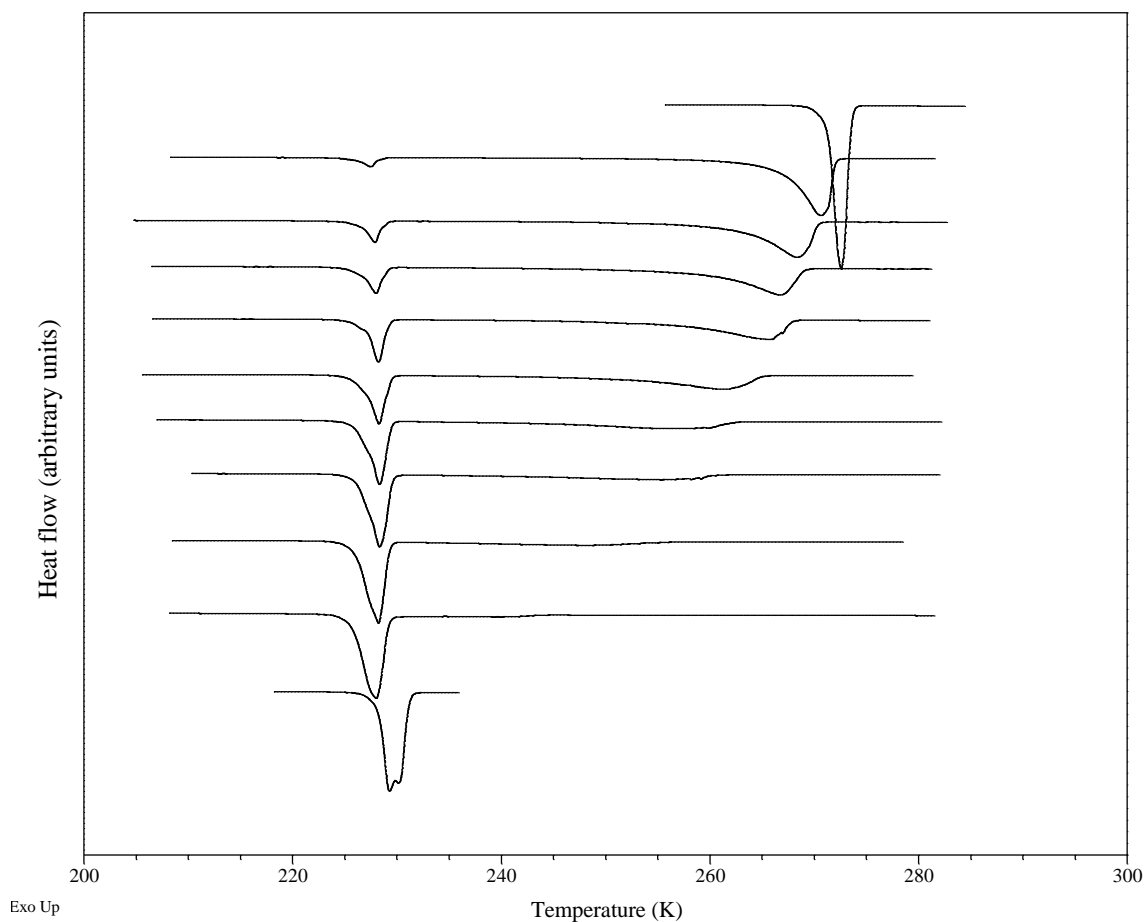


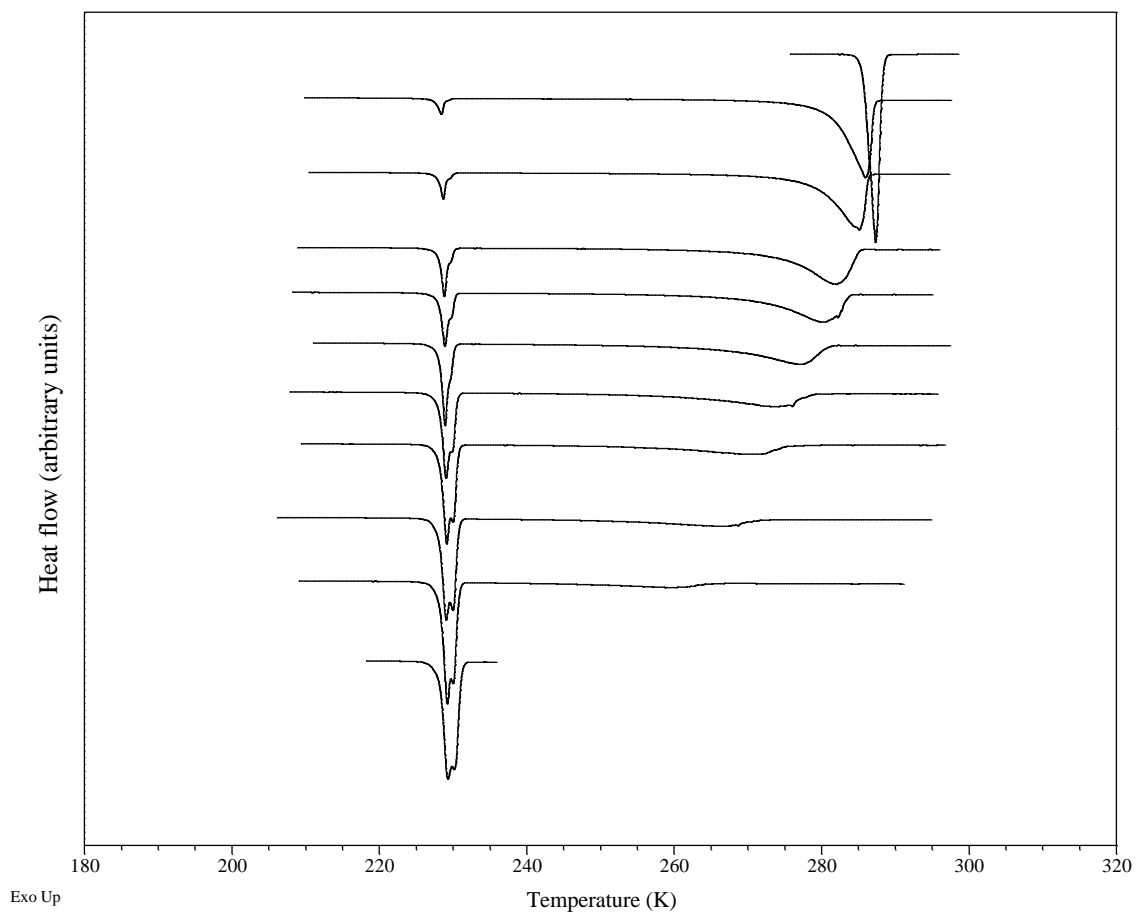
Thermograms of the 9 systems studied in the manuscript are presented as supplementary material 1-9.



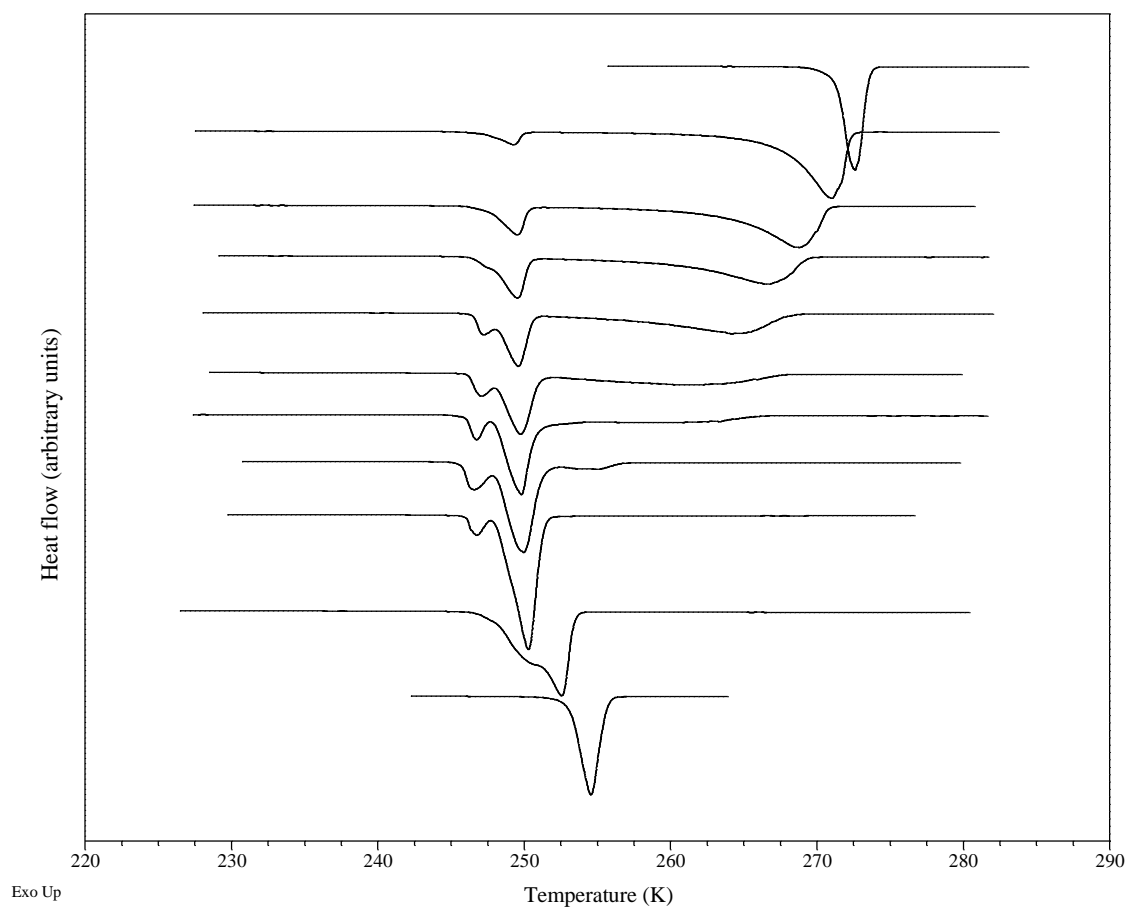
Supplementary material 1. Thermograms of ethyl caprylate + ethyl caprylate system. From up to down:  $x_{\text{caprylate}} = 0.0000; 0.1079; 0.2018; 0.2865; 0.4333; 0.4975; 0.6102; 0.7195; 0.9219; 1.0000$ , respectively.



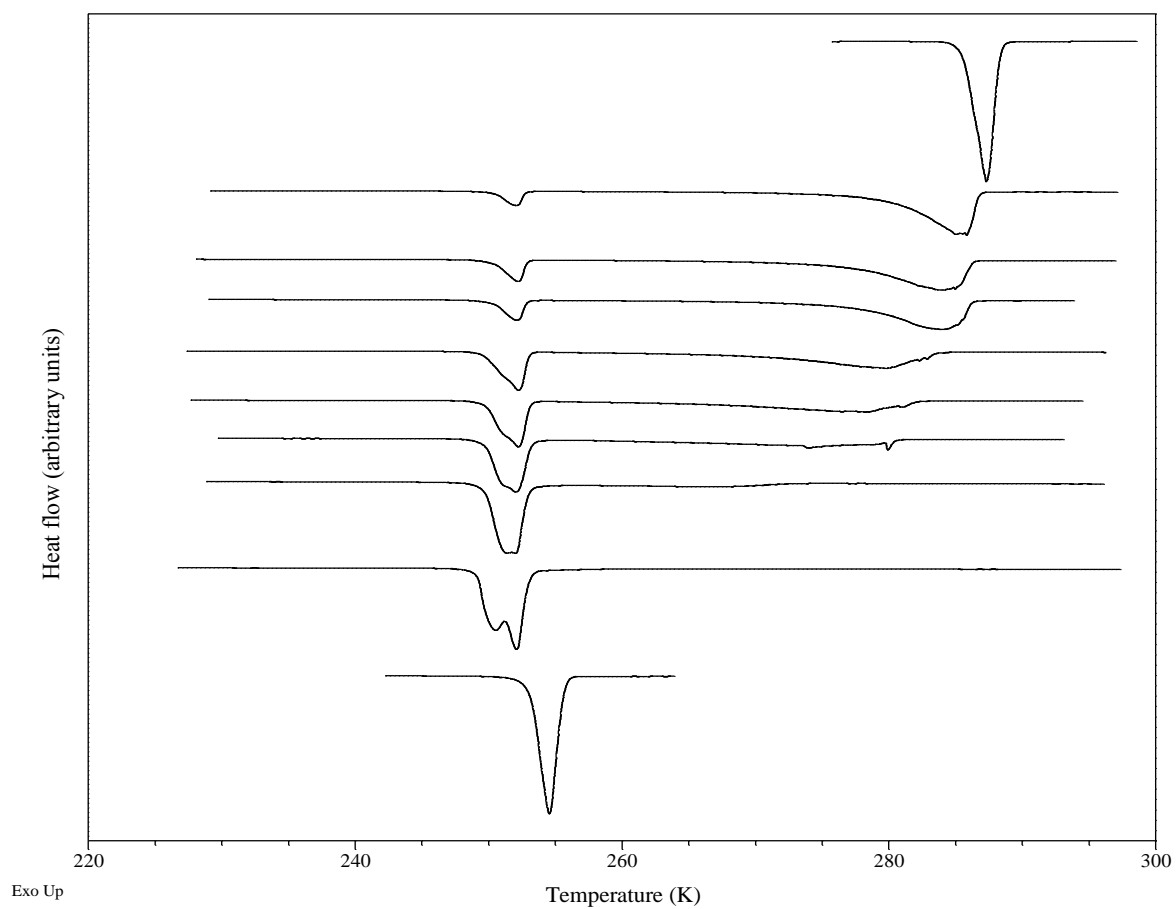
Supplementary material 2. Thermograms of ethyl laurate + ethyl caprylate system. From up to down:  $x_{\text{caprylate}} = 0.0000; 0.1070; 0.2137; 0.2929; 0.3809; 0.4916; 0.6270; 0.7237; 0.8041; 0.9000; 1.0000$ , respectively.



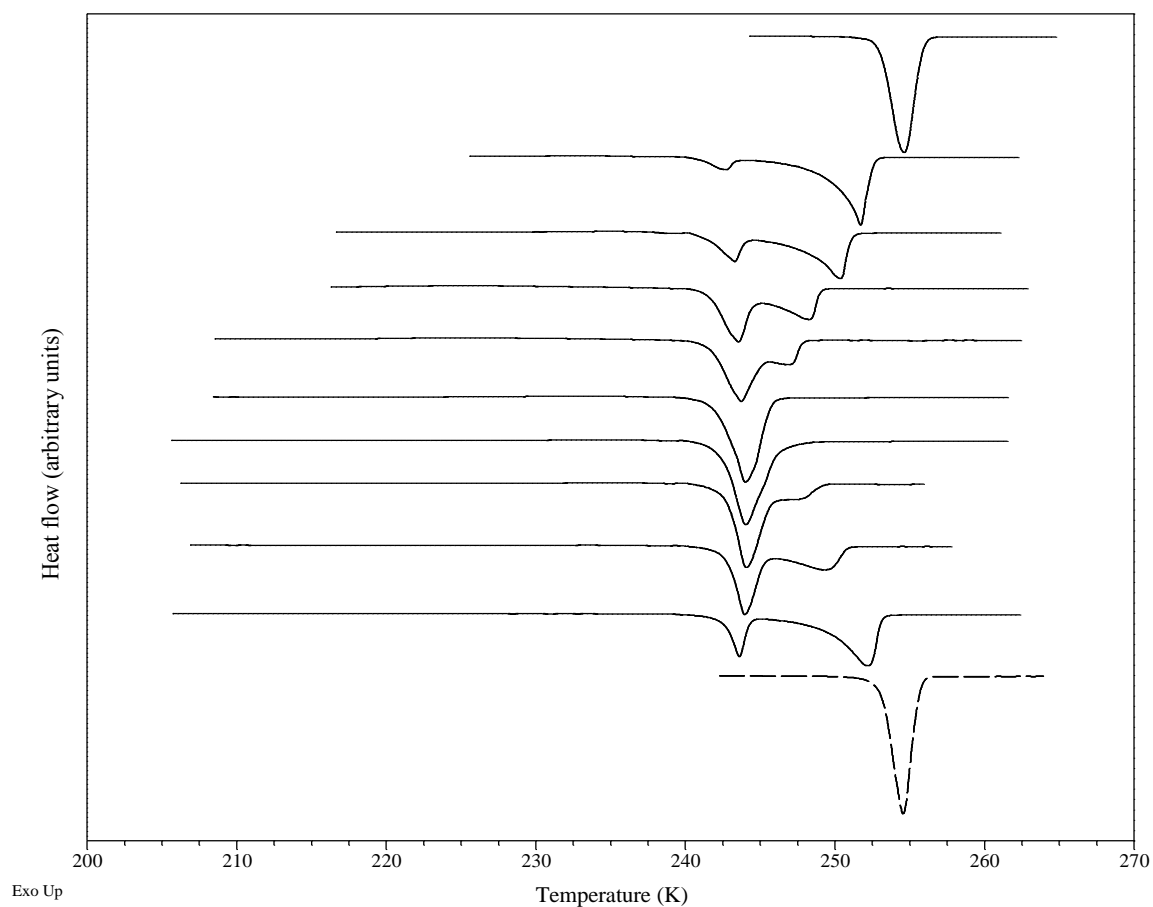
Supplementary material 3. Thermograms of ethyl myristate + ethyl caprylate system. From up to down:  $x_{(\text{caprylate})} = 0.0000; 0.1088; 0.1657; 0.2750; 0.3559; 0.5083; 0.6113; 0.7099; 0.7905; 0.8675; 1.0000$ , respectively.



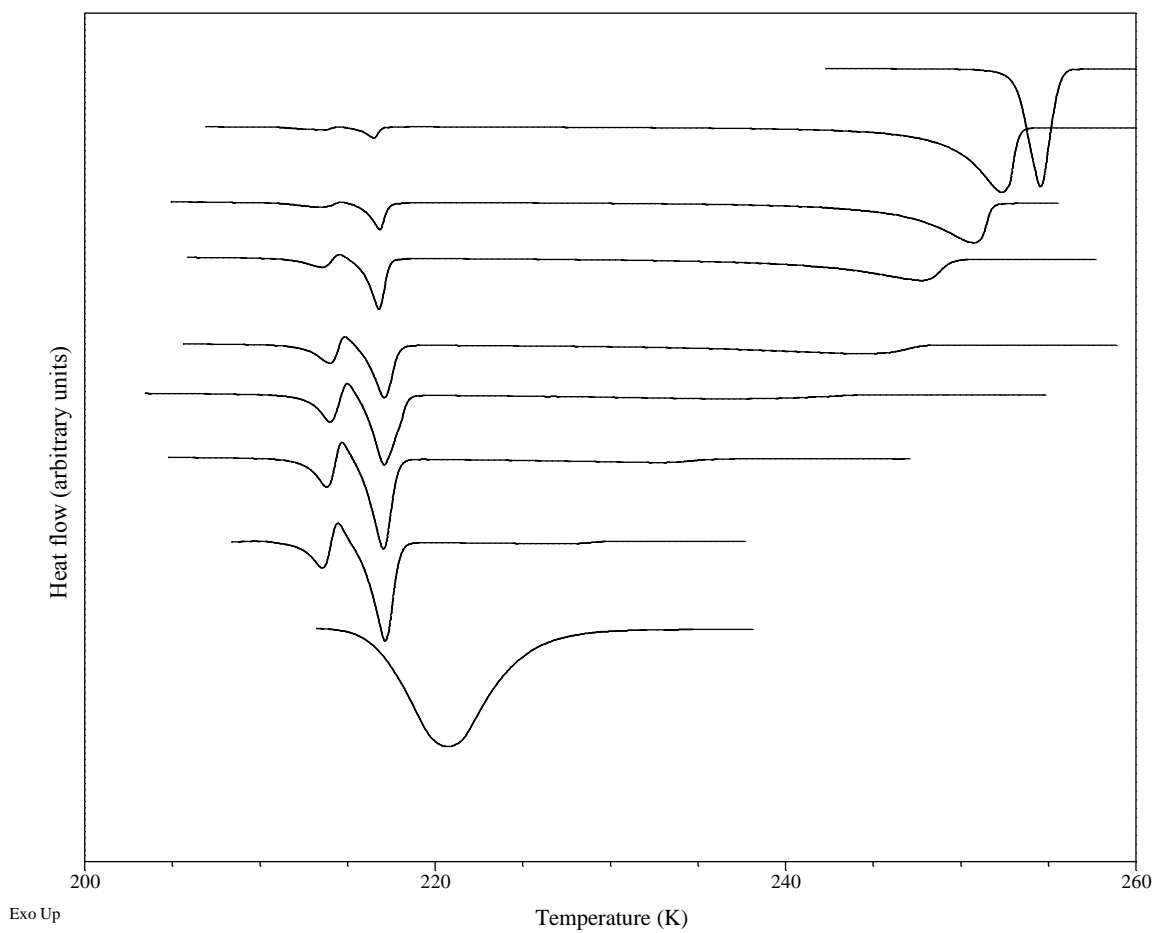
Supplementary material 4. Thermograms of ethyl laurate + ethyl caprate system. From up to down:  $x_{(caprate)} = 0.0000$ ; 0.0967; 0.1979; 0.2901; 0.3901; 0.4996; 0.6000; 0.7105; 0.7955; 0.9160; 1.0000, respectively.



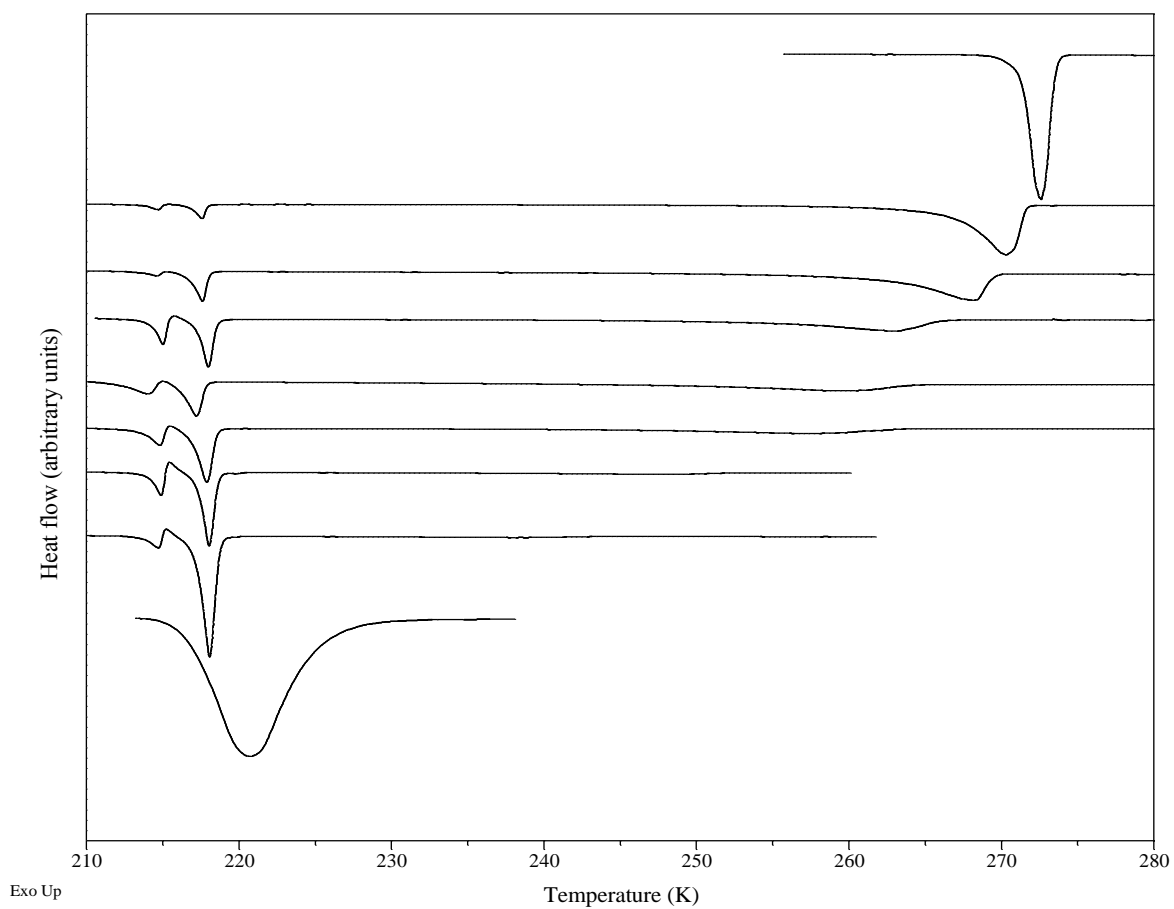
Supplementary material 5. Thermograms of ethyl myristate + ethyl caprate system. From up to down:  $x_{(caprate)} = 0.0000$ ; 0.1264; 0.1891; 0.2786; 0.3822; 0.4854; 0.5996; 0.7830; 0.9006; 1.0000, respectively.



Supplementary material 6. Thermograms of ethyl caprate + ethyl oleate system. From up to down:  $x_{(caprate)} = 0.0000$ ; 0.1097; 0.1974; 0.3134; 0.3821; 0.4891; 0.5688; 0.6885; 0.7762; 0.9007; 1.0000, respectively.

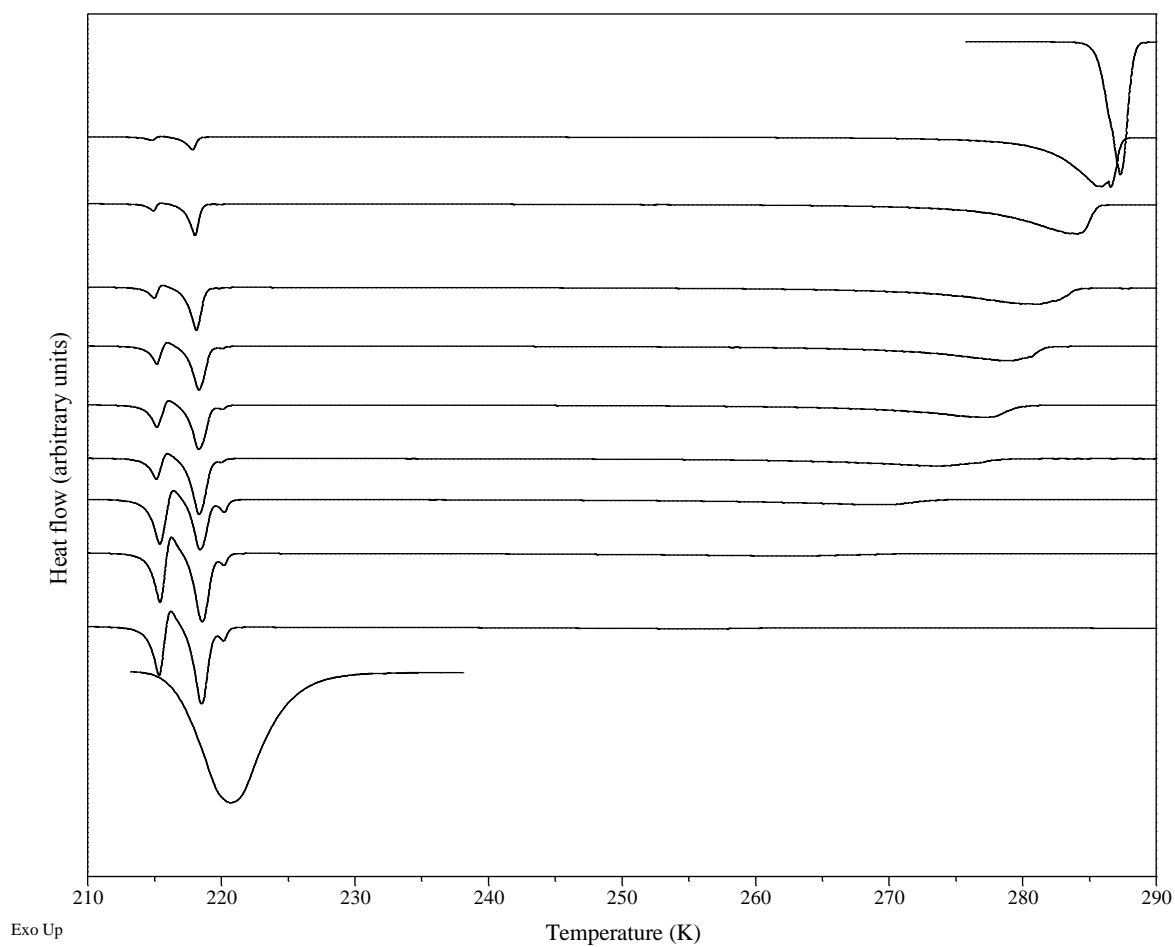


Supplementary material 7. Thermograms of ethyl caprate + ethyl linoleate system. From up to down:  $x(\text{linoleate}) = 0.0000; 0.0909; 0.1694; 0.2853; 0.4333; 0.6245; 0.7028; 0.7992; 1.0000$ , respectively.



Supplementary material 8. Thermograms of ethyl laurate + ethyl linoleate system. From up to down:  $x(\text{linoleate}) = 0.0000; 0.1080; 0.2184; 0.4176; 0.5107; 0.5800; 0.7979; 0.8966; 1.0000$ , respectively.





Supplementary material 9. Thermograms of ethyl laurate + ethyl linoleate system. From up to down:  $x(\text{linoleate}) = 0.0000; 0.0925; 0.2078; 0.3342; 0.4098; 0.4788; 0.5826; 0.7051; 0.8202; 0.9026; 1.0000$ , respectively.